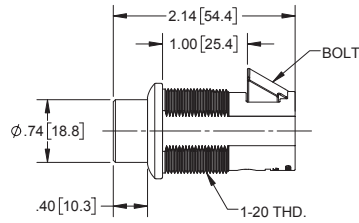


Push Button Latches



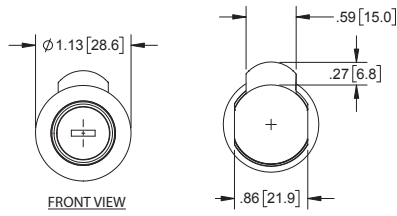
Locking



RIGHT SIDE VIEW



Non-Locking
(in-line tab shown)



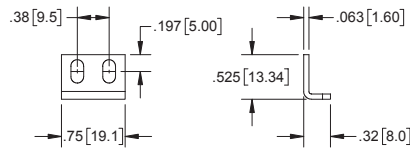
FRONT VIEW

REAR VIEW

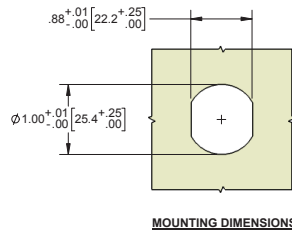
LATCH



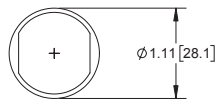
Locking
Black Face
(perpendicular tab shown)



STRIKE



MOUNTING DIMENSIONS



Locking and Non-Locking Latches

Part Number	Description	Lock Face Finish
2-11BK	non-locking	black
2-13BK	locking	polished
2-13BK50*	locking	polished
2-14BK	locking	black

* 2-13BK50 is same as 2-13BK except for different key codes (CH742-CH762)

Locking and Non-Locking Latches with Pull Tab In-line with Bolt

Part Number	Description	Lock Face Finish
2-11BK01	non-locking	black
2-13BK01	locking	polished
2-14BK01	locking	black

Locking and Non-Locking Latches with Pull Tab Perpendicular to Bolt

Part Number	Description	Lock Face Finish
2-11BK02	non-locking	black
2-13BK02	locking	polished
2-14BK02	locking	black

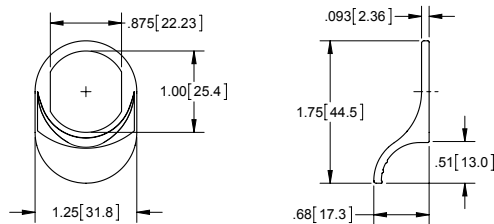
Push Button Latches Features

- ▶ material: nylon with UV stabilizers
- ▶ finish: black textured
- ▶ patented design
- ▶ parts have internal o-rings
- ▶ face gasket available separately (part no. 2-1G), to meet NEMA type 4, 12 and IP65 enclosure requirements
- ▶ all latches include:
 - ▶ body nut
 - ▶ lock washer
 - ▶ strike in 304SS with passivated finish
 - ▶ (2) ringed keys
- ▶ key code CH751 (for locking only)

Gasket for Push Button Latches

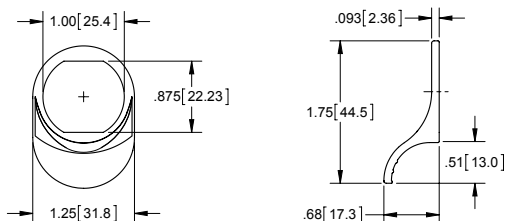
Part No.	Description
2-1G	smooth black rubber gasket for Push Button Latches

Pull Tab UV



In-line with Bolt

Part Number	Material	Finish
KH39BK	nylon with UV stabilizers	black textured



Perpendicular to Bolt

Part Number	Material	Finish
KH39BK-01	nylon with UV stabilizers	black textured