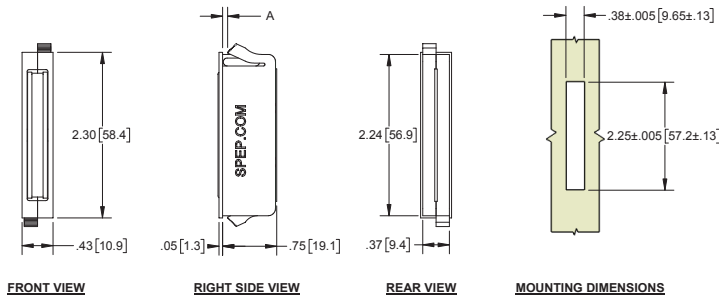


## Snap-In Magnetic Catches

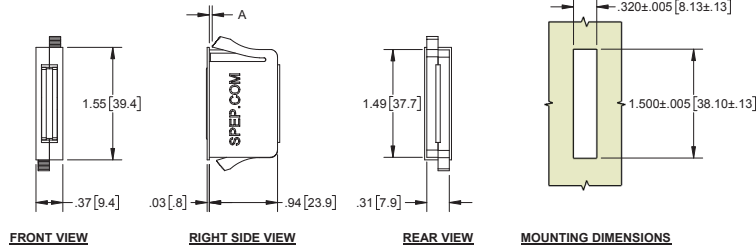
Large



Part Number	A	Panel Thickness (min. - max.)
D392BK	.01 [3]	.02 [5] - .08 [2.0]
D392BK-01	.07 [1.8]	.08 [2.0] - .14 [3.5]
D392BK-02	.13 [3.3]	.14 [3.5] - .20 [5.0]

- ▶ black polypropylene housing
- ▶ steel, zinc plated end plates
- ▶ approximate holding force: 14.0 lb [62.3N]
- ▶ uses strike part no. **D392S-01** & **D392S-02** see below for more details

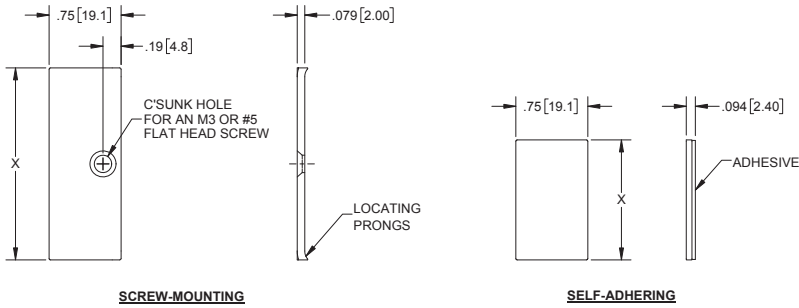
Small



Part Number	A	Panel Thickness (min. - max.)
D395BK	.04 [1.0]	.02 [5] - .08 [2.0]
D395BK-01	.10 [2.5]	.08 [2.0] - .14 [3.5]
D395BK-02	.16 [4.0]	.14 [3.5] - .20 [5.0]

- ▶ black polypropylene housing
- ▶ steel, zinc plated end plates
- ▶ approximate holding force: 8.0 lb [35.6N]
- ▶ uses strike part no. **D395S-01** & **D395S-02** see below for more details

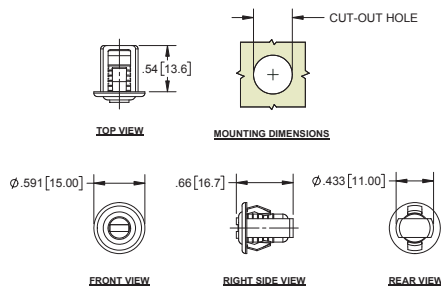
Strikes



Part Number	Description	Dim X
D392S-01	self-adhering	2.00 [50.8]
D392S-02	screw-mounting	2.00 [50.8]
D395S-01	self-adhering	1.25 [31.8]
D395S-02	screw-mounting	1.25 [31.8]

- ▶ material: steel
- ▶ finish: zinc plated

## Snap-in Magnetic Catch



Part Number	Holding Force lbf [N]	Panel Material	Panel Thickness	Cut-out Hole
D411	approx. 1.5 [6.9]	steel	.031 [7.9] - .055 [1.40]	$\phi .449$ [11.40] - $\phi .453$ [11.50]
		steel	.055 [1.40] - .118 [3.00]	$\phi .469$ [11.91] - $\phi .472$ [12.00]
		resin	.055 [1.40]	$\phi .445$ [11.30] - $\phi .453$ [11.50]

- ▶ color: white
- ▶ plastic housing and cover
- ▶ steel zinc plated yoke plates