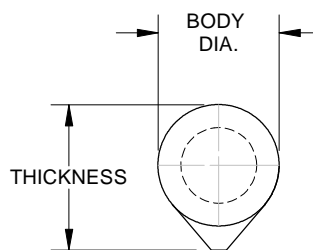
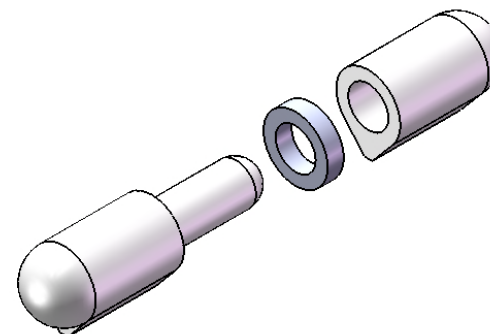


FRONT VIEW



RIGHT SIDE VIEW



NOTES:

1. MATERIAL:
 - A) BODY: ALUMINUM
 - B) PIN: 302/304SS
 - C) BUSHING: 302/304SS
2. FINISH: MILL, FREE FROM OIL
3. DIMENSIONS IN BRACKETS ARE IN METRIC.

W210-20	7.87 [200.0]	.906 [23.00]	1.114 [28.30]	.630 [16.00]
W200-20	7.09 [180.0]	.787 [20.00]	.992 [25.20]	.500 [12.70]
W190-20	5.91 [150.0]	.787 [20.00]	.992 [25.20]	.500 [12.70]
W180-20	5.32 [135.0]	.709 [18.00]	.902 [22.90]	.500 [12.70]
W160-20	3.94 [100.0]	.630 [16.00]	.768 [19.50]	.394 [10.00]
W140-20	3.15 [80.0]	.512 [13.00]	.606 [15.40]	.315 [8.00]
W130-20	2.76 [70.0]	.453 [11.50]	.520 [13.20]	.236 [6.00]
W120-20	2.36 [60.0]	.394 [10.00]	.472 [12.00]	.236 [6.00]
W110-20	1.97 [50.0]	.315 [8.00]	.378 [9.60]	.197 [5.00]
W100-20	1.58 [40.0]	.315 [8.00]	.378 [9.60]	.197 [5.00]
PART NO.	LENGTH	BODY DIA.	THICKNESS	PIN DIA.

SIERRA PACIFIC ENGINEERING AND PRODUCTS® SPEP.COM		UNSPECIFIED TOLERANCES		MATERIAL:		PART NUMBER:
		ANGLES: ±3°		FINISH:		DESCRIPTION:
CONFIDENTIAL PROPRIETARY INFORMATION PLOT DATE: 9/18/2019 This document contains information that is the confidential and proprietary property of SPEP and may not be copied, published, or disclosed to others, or used for any purpose other than review, without the express written authorization of an authorized officer of SPEP. This document must be kept only in SPEP's confidential files when not in use.	PLOT DATE: 9/18/2019	INCHES	MM	UNITS:	THIRD ANGLE PROJECTION	ALUMINUM WELD-ON HINGES WITH STAINLESS STEEL PIN AND STAINLESS STEEL BUSHING
		.XX ±.030	.X ±.76	SCALE: 1:1		
		.XXX ±.015	.XX ±.38	WEIGHT:	SIZE: A SHEET 1 OF 1	
		.XXX ±.005	.XXX ±.13	DWG. NO. 14376-W100-20		